



TERMINAL PROJECT ON HOLD

By Frank Immel, chairman
Fauntleroy Ferry Advisory Committee

With the passing of I-976, Governor Inslee has been forced to postpone all related projects not yet under way. While the Fauntleroy Ferry Terminal project is part of the ferry system's long-range plan, it is at a very early stage. Consequently, meetings to discuss development of the public outreach plan for the project have been put on hold until the full effects of I-976 can be addressed.

In early September, the Seattle Police Department decided to end its contract with Washington State Ferries to provide traffic control at the Fauntleroy terminal. The system then sought successfully to add this terminal to the Washington State Patrol's existing contract that provides traffic control at other terminals throughout the system.

Contract negotiations and training kept officers from stepping in right away. As of this writing, morning and afternoon coverage is spotty but getting better.

Be mindful that an officer may or may not be present when you drive through the area but boats may be offloading and students may be going to or coming home from school on Vashon, so please be careful and patient.

I'll continue to keep you posted on these and other developments that will or could affect our neighborhood.



The planter boxes along 45th Ave. SW and SW and Wildwood will soon be ready for planting bulbs for a big spring show and the FCA committee in charge invites you to come dig in the dirt.

Each winter and spring, neighbors pitch in to plant and maintain these eye-catching spots of color in the Endolyne business area. Hundreds of bulbs are on their way for a community planting party on **Saturday, Jan. 11, 10 am - noon, rain or shine**. Even an hour of your time would be appreciated.

Let Ann Dawson (garyann@quidnunc.net) know you're coming or just show up. Bring a trowel, gloves, and any other hand tools you like for tilling and planting.

FAUNTLEROY CREEK SPAWNING SEASON SAVED BY EMERGENCY WORK

By Judy Pickens

Salmon watchers documented 19 coho spawners coming into Fauntleroy Creek this year, the first on Oct. 21 and the last on Oct. 27.

Soon after the first spawner, volunteer watchers spotted 30 robust fish schooling near the creek mouth in Fauntleroy Cove. They also spotted a thicket of sea grass in the channel and called on State Fish and Wildlife to get the owner's permission so the Fauntleroy Watershed Council could get it cleared. A contractor team, backed by volunteers, responded to the emergency and an adjacent owner shifted logs on his beach that were also a barrier.

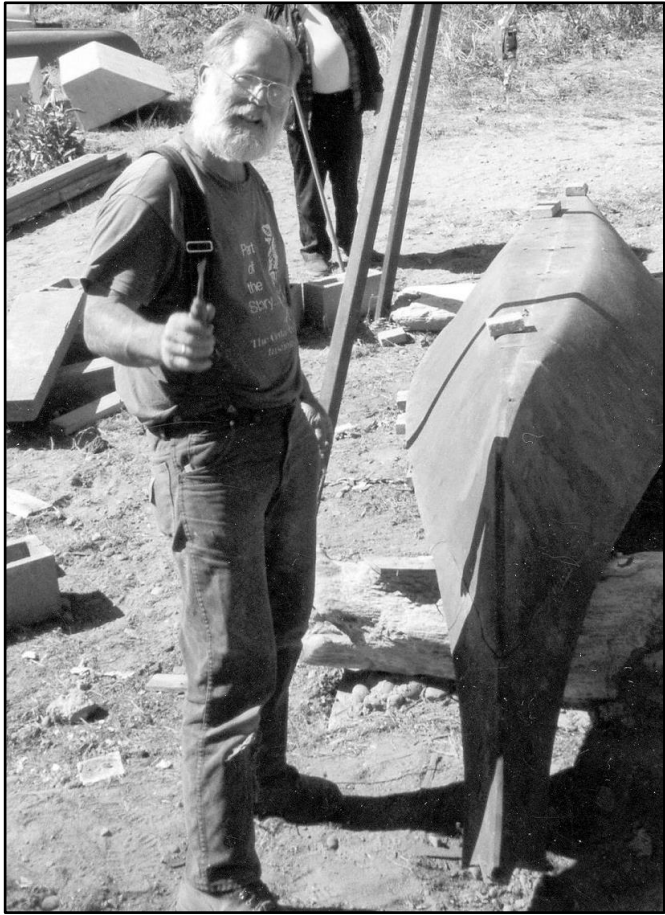
The spawners ventured just a few yards upstream of the fish ladder. In mid winter, volunteers will monitor one spot where spawning likely occurred to record any "home hatch" fry that emerge from the redd. *(continued on p. 5)*



Steve Richmond and Joey Baumgarten, invasive-removal specialists with Garden Cycles, pull reed canary grass from the channel near the beach so spawners can access Fauntleroy Creek. Photo courtesy Dennis Hinton

IN THIS ISSUE

Culverts replacement project.....	3
Fauntleroy name	4
Upcoming events	6
Festival recap	7
From the president	10



CASTING OFF

Sculptor Tom Jay created his first salmon-related installation in Fauntleroy in 1998 for the fish-ladder viewpoint. The following year, the Chimacum artist's pieces (including this canoe) began to set a Coast Salish theme for Cove Park. Then in 2015, a commission from King County brought him back to Fauntleroy with more salmon art for the redesigned park.

This prolific artist, metal caster, and lover of words died Nov. 10. *Photo FCA archives*

2020 CENSUS NOW HIRING HERE

If you've thought about being a census taker, now's the time to turn thought into action.

The U.S. Census Bureau is hiring temporary staff for the 2020 census and could use more people in Fauntleroy. Pay starts at \$23/hour and 58 cents/mile and training will be in the spring.

"People who fit well for this work include those who are often volunteers but, in this case, will be helping their community and getting paid," said A. J. Bastarache, recruiting assistant with the bureau.

Also a good fit: performers or artists who could use a few months of well-paid work, retirees, students who need flexible hours, and people who want to earn money and add to their resume while searching for a permanent job.

Having enough census takers to get an accurate count is important, even at the neighborhood level, because the count influences how federal funding for programs such as school lunch and medical services gets allocated.

To learn more, visit www.2020census.gov/jobs or call 1-855-JOB-2020 (1-855-562-2020).



Christmas Eve Services



4:00 pm
tailored to children
7:00 pm
candlelight & carols
11:00 pm
candlelight & communion

206-932-5600

jackie@fauntleroyucc.org/www.fauntleroyucc.org



Kimberly Terry

Sr. Lending Manager | NMLS 205713
Office: (206) 774-7595 | Fax: (888) 732-6497
kterry@evergreenhomeloans.com
www.evergreenhomeloans.com/kimberlyterry



2265 First Avenue S | Seattle, WA 98134

 Evergreen Home Loans ID NMLS 3182



9251 45th Ave SW
Seattle, WA 98136

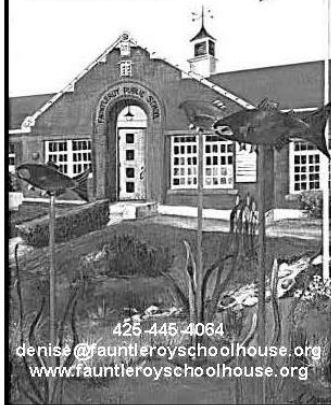
206.556.2159

www.treoorganicsalon.com
info@treoorganicsalon.com

Fauntleroy Schoolhouse

"Where community comes together"

Property Manager
Denise Wallace



425-445-4064
denise@fauntleroysschoolhouse.org
www.fauntleroysschoolhouse.org

THE Kenney

West Seattle's Premier Provider of Senior Services

Natalie Faulkner

Director of Sales & Marketing

7125 Fauntleroy Way SW, Seattle, WA 98136-2008

(206) 937-2800 • Direct (206) 933-2089

nfaulkner@TheKenney.org

COMMUNITY FEEDBACK HELPING CITY ASSESS CULVERT OPTIONS

By Cody Nelson, project manager, Seattle Public Utilities

This past year, the Fauntleroy Creek Culverts Replacement project team has done an incredible amount of work to determine potential options to replace two aged culverts that are at risk of failure.

This work to replace culverts at California Ave. SW and 45th Ave. SW has included field investigation, brainstorming, community impact and economic analyses, engineering feasibility, and the gathering of community feedback through our outreach efforts.

Since our public open house and other outreach activities this past spring, we've been assessing the technical feasibility of replacement options, evaluating baseline project benefits and costs, and continuing to connect with neighbors and the community around your interests, including working with Fauntleroy Church about the jointly owned California Ave SW culvert.

We heard you when you expressed concern about safety, construction, and long-term impacts as well as providing access for salmon. We know many of you are committed to seeing us open healthy habitat in the upper creek to spawners and to continuing to be champions of this unique community asset.

Your feedback to date is helping us strike a balance among all needs in pursuit of a common mission to protect the area's environment and quality of life.

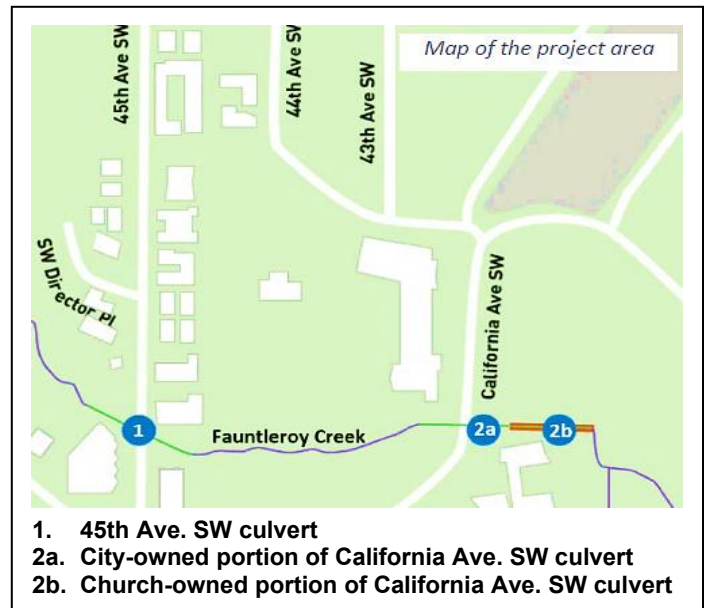
At the same time, we've been in close communication with the Washington Department of Fish and Wildlife (WDFW). It has begun an inventory of all stream/roadway crossings in Seattle in order to update fish-passage barriers on its mapping site (tinyurl.com/yf8aoxfd). Visits to the culverts on Fauntleroy Creek confirmed that those at 45th Ave. SW and at California Ave. SW are barriers to fish accessing upstream habitat.

WDFW also advised cleaning the Fauntleroy Fish Ladder to improve fish passage; SPU is working with crews and regulatory agencies to schedule this maintenance for next year.

The requirement that new culverts be considerably larger in diameter than those they replace is based on WDFW's guidelines for stream crossings, including culverts. While SPU does not control the diameter, we do have some control over other elements that could help reduce unwanted usage of culvert interiors. To that end, we have begun conversations with the Southwest Precinct's crime prevention officer about strategies to consider as we continue design.

At this early stage, cost estimates for each culvert range from \$9 million to \$20 million and won't be refined until more design work on recommended options is complete. Because of such cost uncertainty, we will do a value-engineering study early in the new year.

That study will engage outside experts in a peer review of the design to recommend how to get the most value for the least cost. For instance, it may identify ways to cut costs by using different construction methods. SPU will then evaluate culvert options to a 30% design level, incorporating any value-engineering recommendations, plus community and church input, to decide on preferred options.



WDFW has issued a request for proposals to its Fish Passage Barrier Removal Board for grant funding. SPU plans to partner with the church and the Fauntleroy Watershed Council to submit a proposal that would enable design funding to continue. We expect to explore other cost-reduction opportunities through state and federal grants as they become available.

The community may also have opportunities for grant funding that could add community amenities and educational opportunities to enhance the overall project.

As mentioned, the next phase of the project involves early design on the recommended replacement options and completion of the value-engineering study. To that end, we will be doing additional land surveying near the California Ave. SW culvert. You may have already seen this work going on and we'll be sure to let neighbors know in advance if traffic might be impacted.

After the surveying, we'll begin geotechnical investigation to provide more subsurface information and will let you know those dates. Lastly, we'll bring a more detailed project update to the community within a few weeks.

To stay tuned on project status, what we've heard from the community, and what to expect in 2020, visit our project website at www.seattle.gov/utilities/environment-and-conservation/projects and click on Fauntleroy Creek Culverts Replacement. If you don't find what you need, contact me at cody.nelson@seattle.gov or 206-684-3066.

WEST SEATTLE BLOG
West Seattle news, 24/7
westseattleblog.com
Breaking news? Text or call 206-293-6302.

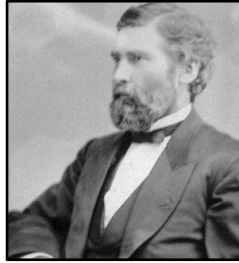
WHAT'S IN A NAME? A COVE, A CREEK, A PARK, A NEIGHBORHOOD

By Judy Pickens

Long-time Fauntleroy residents are likely aware of how this southwest corner of West Seattle got its name - how George Davidson came here in 1857 while surveying Puget Sound and named the cove after his future father-in-law. That's how the story is told but the sequence of the process is a little different.

In 1845, George joined the United States Coast Survey and Robert Henry (R. H.) Fauntleroy joined a few months later. The older man took George under his wing and even introduced him to his family in Indiana, including daughter Ellinor. R. H. died of cholera three years later.

In 1850, George was put in charge of surveying the Pacific coastline and, while in Puget Sound, he took the opportunity to honor his former mentor by naming his brig the *R. H. Fauntleroy*. He then named our cove after that ship.



Ellinor Fauntleroy and George Davidson

George also named Pt. Williams and Brace Pt. on the arc of the cove. Turning to the northwest, he named three Olympic peaks for the four Fauntleroy children: Mt. Constance, Mt. Ellinor, and The Brothers (for Albert and Edward). With all this honoring to his credit, he finally married Ellinor in 1858 - the year after his naming of Fauntleroy Cove.

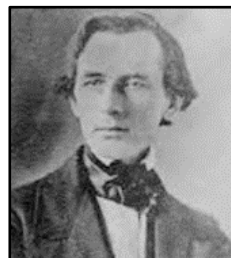
George's talent for mathematics and astronomy was a good fit for the Coast Survey. The assignment that brought him to Puget Sound included determining the latitude and longitude of geographic features and advising where to locate lighthouses.

He went on to lead scientific studies around the world, including for the Panama Canal, and to establish an observatory. Among his many other credits were charter member of the Sierra Club and first professor of

geography at the University of California, Berkeley.

Commemorations after his death, in 1911, include the naming of several geographic points along the West Coast and in Alaska.

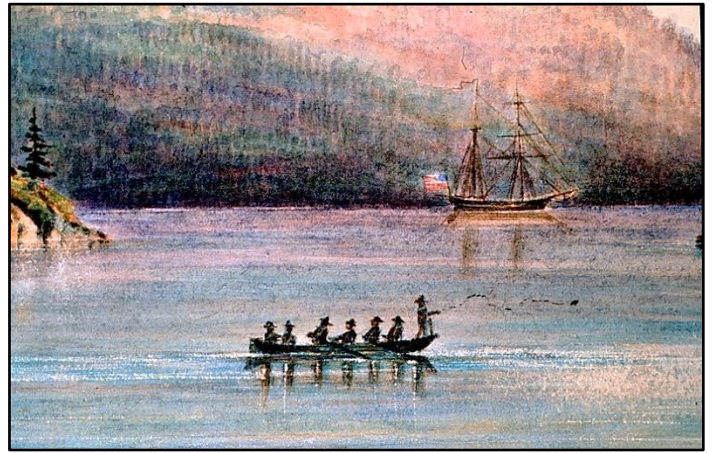
But what more of R. H.? The legacy of our namesake was also notable. After trying his hand in the mercantile business, he became an assistant to the



R. H. Fauntleroy

superintendent of the Coast Survey. All things mechanical proved to be his forte and led to two patented inventions.

Upon R. H.'s death, the superintendent wrote, "His attainments as a mathematician and astronomer and in geodesy were of a high order." (Geodesy is measuring and understanding Earth's geometric shape, orientation in space, and gravity field.)



USCS Brig Fauntleroy surveyors at work in Rosario Strait; James Madison Alden watercolor, 1857. NOAA Photo Library

COAST SALISH POINT NAMES

Thanks to the Southwest Seattle Historical Society for help in unearthing this detail:

George Davidson's naming of Pt. Williams and Brace Pt., the promontories that define Fauntleroy Cove, was presumptuous as they already had names.

In 1922, early-Seattle scholar T. T. Waterman published a map that identified present-day Pt. Williams as Tcixha'idus (*chi-HA-ee-dus*) and Brace Pt. as Psiya'hus (*psai-YAH-hus*).

WHAT'S IN A MIDDLE NAME? LAUGHS!

These days, only trivia champions would know that "Fauntleroy" is also the middle name of Donald Duck, the only major Disney cartoon character to have one.

The animated fowl first appeared in 1934 and, eight years later, the studio was working on *Donald Gets Drafted* when Walt himself had an idea to add dramatic effect: Give the duck a middle name and reveal it on his duck's draft notice.

The choice of "Fauntleroy" likely tapped into fashion popularized by *Little Lord Fauntleroy*, an 1886 novel by Frances Hodgson Burnett. The author dressed her young protagonist in black velvet knee pants and cutaway jacket over a blouse with a white lace collar. This suit remained a fad in formal wear for American middle-class children well into the 1900s.

Donald first appeared wearing a green hat and pants in the 1931 storybook *The Adventures of Mickey Mouse*. To be a foil for Mickey in subsequent stories, the studio gave him a short temper and, since ducks are associated with water, dressed him a sailor shirt. With just a little imagination, that attire resemblances the little lord's suit.



Donald Fauntleroy Duck in *Donald Gets Drafted*, 1934

SPAWNING SEASON (continued from p. 1)

A total of 125 students and area residents visited during the Silver Anniversary of spawning on the creek. "Harry and Louise" were the first spawners, in 1994.

"In my opinion, all who witnessed these spawners have a remarkable effort to thank," said long-time creek volunteer Dennis Hinton. "From the watcher who saw spawners in distress to the team from Garden Cycles who dropped what they were doing to weed the channel to the donors that made paying the bill possible from our stewardship fund, it came together like clockwork."

CONSIDER INVESTING \$25 FOR 25

The Silver Anniversary of spawning here is calling attention to the Fauntleroy Watershed Stewardship Fund, which finances needed habitat work not covered by grants. It has received more than \$17,000 in tax-deductible donations since March 2018.

"Clearing the channel for spawners was our first draw from this fund and these fish would not have been saved without the generosity of fund donors," said Judy Pickens with the Fauntleroy Watershed Council. The fund accepts donations in any amount.

"We welcome donations in any amount," she said. "If yours needs to be small or if you want to give in the name of a loved one this holiday season, consider a habitat investment of '\$25 for 25.'"

Find details at www.fauntleroywatershed.org/donate.html or call Judy at 206-938-4203.



A thief flees with package in hand from a front porch in West Seattle. Photo published on West Seattle Blog

'PORCH POACHING' IN SEASON

A change of season typically brings a change in neighborhood crime and we're now in the season when the Seattle Police Department sees an upturn in burglaries and thefts.

This time of year, package thefts increase as "porch poachers" follow delivery trucks or simply see a package in plain view of the street and take it. The Southwest Precinct recommends choosing the shipping option that is most likely to get your package to you, not to a thief.

- The safest option if someone will be home is to require a signature upon delivery.
- Have your package shipped to a friend, neighbor, or apartment manager who will be there at delivery time.
- If your delivery service offers a nearby lockbox, have small packages shipped there for you to retrieve using a code.
- Ask your delivery service to hold your package for pick up at its facility.

Track your shipment online if you can so you know when to expect it. Especially during this busy month, delivery services hire many temporary drivers, and the one who brings your package may leave it where you don't expect it. If tracking says it's been delivered but you don't find it, you'll know to scout around.

If home delivery works best for your situation, check out locking bins on the market.



**KAMILA
KENNEDY
HOMES**

206.406.6303 kamilakennedyhomes.com
Windermere Real Estate/Wall Street Inc.
4526 California Avenue SW, Seattle, WA 98116

Let Us Help You At Home

Senior Care • Respite Care • Alzheimer's • Dementia
Surgery Recovery • Pregnancy/New Moms
Hourly/Daily/Weekly • No Contracts or Min. Hours

 **FREE In-Home Assessment**
206-420-4934
SynergyHomeCare.Com

DANCE!
WEST SEATTLE

POISE! GRACE! SELF CONFIDENCE!
WALK IN & DANCE OUT!

9131 California Ave. SW, Seattle, WA 98136 ■ 206.938.3062
www.dancewestseattle.com

EVENTS BRIGHTEN WINTER

LINCOLN LOVERS: Show your love of the park's urban forest by joining Friends of Lincoln Park for work parties on **first Saturdays (Dec. 7, Jan. 4, Feb. 1, March 7)** and/or **third Sundays (Dec. 15, Jan. 19, Feb. 16)**). Muster at the kiosk in the north parking lot at **9 am** with sturdy shoes, long pants, work gloves, and water. Contact Sharon Baker at 206-464-1068 or sabaker41@gmail.com.

HOLIDAY BAZAAR: Wildwood Market's annual Blithe Bazaar will be **Saturday, Dec. 7, 4 - 8 pm**. Art, jewelry, housewares, and lotions and potions by West Seattle artisans, plus drink specials, will make this a cozy evening of sips and shopping.

CHRISTMAS CONCERT: The Fautleroy Church chancel choir will perform its much-anticipated Christmas concert on **Sunday, Dec. 15, at 4 pm** in the sanctuary. Bronwyn Edwards will direct the choir and instrumentalists in both sacred and rollicking music of the season. Free, with reception to follow.

FAUTLEROY WATERSHED COUNCIL: Watershed residents interested in stewarding natural areas are welcome **Thursday, Jan. 9, and Thursday, March 12, at 7 pm** in the Fautleroy Church library. Ask Judy Pickens about the agenda: 206-938-4203.

COMMUNITY BUSINESS: The FCA Board welcomes residents at its monthly business meetings on second Tuesdays (**Jan. 14, Feb. 11, March 10**) at **7 pm** in the boardroom at the Fautleroy Schoolhouse. Ask President Mike Dey about the agenda: 206-661-0673.

CONCERTS FOR KIDS

The Sunday Kindie West Music Series has seven more performances at the **Fautleroy Schoolhouse**. Doors open at 10 am; shows begin at **10:30 am**.

Dec. 8 - Johnny Bregar

Dec. 29 - Brian Vogan & His Good Buddies

Jan. 12 - Harmonica Pocket

Jan. 26 - The Not-Its

Feb. 9 - Recess Monkey

Feb. 23 - Eli Rosenblatt

March 8 - Caspar Babypants

Buy tickets in advance at www.brownpaper tickets.com for priority seating; \$5 child/\$10 adult. Park in the schoolhouse lot, not in the Fautleroy Church lot.

FCA'S BUSINESS & ORGANIZATION PARTNERS

Bruce Butterfield, Berkshire Hathaway Real Estate
 Cherie's Canine Casa
 Crissey Behavioral Consulting
 Dance! West Seattle
 DSquared: Occasions With Soul
 Endolyne Joe's Restaurant
 Fautleroy Church, United Church of Christ
 Fautleroy Community Service Agency & Fautleroy Children's Center
 Garden Coaching Solutions
 Kamila Kennedy Homes
 Kimberly Terry, Evergreen Home Loans
 Pilates at Fautleroy
 Seattle Nature Alliance
 Sky Printing
 South Tacoma Way, LLC
 Synergy Homecare
 The Kenney Retirement Community
 The Unsweetened Tooth
 Treg Organic Salon LLC
 West Seattle & Fautleroy YMCA
 West Seattle Blog
 Wildwood Market



Bruce Butterfield

Realtor & Seniors Real Estate Specialist

www.BruceButterfield.com 206-932-2400

A Life-Long
Fautleroy Fan!

**BERKSHIRE
HATHAWAY**
HomeServices



Sunday-Thursday
8 am - 10 pm

Friday-Saturday
8 am - 11 pm

206-937-5637

9261 45th Ave. SW



206-257-1196
9214 45TH Ave. SW

Monday-Friday 10AM-8PM
Saturday 9AM-8PM
Sunday 9AM-7PM



FOR YOUTH DEVELOPMENT
FOR HEALTHY LIVING
FOR SOCIAL RESPONSIBILITY

seattleyymca.org



FESTIVAL FUN!

Sunday, Oct. 27, was a perfect crisp but sunny day to bring out an estimated 1,500 people to play and catch up with neighbors at the 2019 edition of the Fauntleroy Fall Festival.

Photographer Monika Lidman captured a lot of the action, especially for many children in Halloween attire. Activities included (clockwise from left) a pie-eating contest, a very popular petting zoo, an impressive firetruck, bouncy toys that even zombies could enjoy, and a “petting zoo” of musical instruments.

Festival goers donated \$820 to help fund next year’s event.



TWO STAIRCASES STARTING IN FAUNTLEROY OFFER SCENIC CLIMBS

Need a holiday recovery walk or workout? Our community’s public staircases and right-of-way trails are ready to serve.

The famous one is the SW Thistle Street staircase. Its base is at 46th Ave. SW but, if climbing all 366 steps to Northrop Pl. SW is too daunting, exit midway at 44th, just before the going gets steeper.

For something more out of the way in Fauntleroy, try the 50th Ave. SW/SW Roxbury staircase. From the base on 50th between 9680 and 9800, you’ll exit on 48th Ave. SW between 9667 and 9675. Walk north along 48th, turn right just past 9642, and walk the public path up to 47th to where it ends between 9635 and 9643.

To extend your climb up the SW Roxbury staircase, walk north on 47th, turn east at the first sharp right onto Roxbury, and walk up the hill. After crossing Marine View Drive SW, the steps and trail become obnoxiously steep but soon level out to take you to the top at California Ave. SW. Now come back down to 45th and Wildwood and reward yourself with a doughnut!

Visit faculty.washington.edu/smott/SeattleStairs.html to check out Seattle’s other 650+ staircases and to find a map of the above routes.



The base of the 50th Ave. SW/SW Roxbury staircase is on 50th between 9680 and 9800.



The Unsweetened Tooth
Introduces a curd trio!
With peach, blackberry and
lemon curd options, you can
make endless variations of
desserts.

To order, contact us at:
(206) 935-0252.

TheUnsweetenedTooth.com

Reclaim your place at the dessert table!

The Unsweetened Tooth is a company in West Seattle focusing on quality desserts with no-sugar added. The founders, Jude and Duncan, founded the business wanting to help family and friends struggling with diabetes and then others who need to eliminate sugar from their diet.

Avid community supporters, they spend their free time volunteering in food kitchens and supporting animal shelters.



FCA MEMBERSHIP RENEWALS SHIFTING TO JANUARY

As reported at the FCA Board's October business meeting, household memberships are up for this time of year and business memberships have increased. To simplify maintaining a growing membership database, the Board is beginning a process of shifting renewal time to align with the calendar.

New members will continue to be welcome at any time. Renewals will become effective in January, covering all of the upcoming calendar year.

"We know many of you have been renewing at FCA's Food Fest in March," said President Mike Dey. "We will lean on our capability to renew through our website to aid in making the shift."

If you're not presently a member or want to renew now for the new year, visit www.fautleroy.net/membership or clip and mail the accompanying form.

NEW NEIGHBORS? REQUEST FCA WELCOME BAG FOR THEM

Nothing says welcome like a bag full of goodies!

When newcomers move into a house or apartment near you, contact Susan Lantz-Dey (slantzdey@aol.com or 206-930-5219) to request a welcome bag. It contains information about the neighborhood and FCA, plus business coupons and a homemade treat.



ANNUAL FCA MEMBERSHIP

___ Community Member: \$25

___ Friend: \$50

___ Supporter: \$100

___ Senior Living Lightly: \$10

Name _____

Mailing Address _____

Email Address _____

Phone _____

Comment: _____

Mail to Fautleroy Community Association
P.O. Box 46343, Seattle, WA 98146



206-935-0252 / theunsweetenedtooth.com

Garden Coaching Solutions



Jenny Mandt

(206) 915-0585

*Get a jump on
your 2019 garden!*

Mention this ad for a 10% discount
on consultations before June 1, 2019.



www.gardencoachingsolutions.com

SAME TEAM

SKY PRINTING

NEW NAME

FORMERLY KNOWN AS ZEBRA PRINT AND COPY

Your West Seattle home for **full service**
graphic design and printing.

4151 Fautleroy Way SW
www.skyprinting.net

206.933.5900
print@skyprinting.net



Muse
AT BENAROYA HALL



DAVIDS
& Co

dsquaredcompany.com

206.932.1059

CONSTANT EFFORT, ESPECIALLY BY BOARD MEMBERS, KEEPS US MOVING

By FCA President Mike Dey

In anticipation of chatting with people at the fall festival, I enjoyed looking back at what we accomplished this year and what issues we faced.

While some accomplishments were one-time events or projects, many are recurring and require a pretty constant effort to sustain them and keep them fresh.

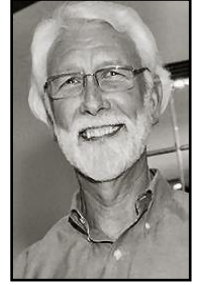
Projects such as restoring and maintaining Fauntleroy Creek, keeping the flower planters in the business triangle looking their best, resupplying pedestrian crossing flags, packing and delivering New Neighbor bags, producing this quarterly newsletter, and keeping the FCA website current - all require a continued focus by board members and other FCA volunteers.

Our membership always comes through to help and, for that, the entire Board is grateful. I am particularly grateful, though, to Board members for faithfully doing what they signed on to do, time after time.

Organizations are only as good as their management team, of course, and in FCA's case, the Board keeps this association on task and moving forward with fresh ideas. As important, each Board member does so while valuing the "old shoe" feel that makes this community special.

Boards need new members with new energy and new ideas and, in this regard, we have been very lucky. In my short time on it, we have welcomed eight new members, each bringing a desire to help and ideas for ways we might improve on what we've been doing or things we should initiate.

On January 1, Kimberly Terry will be our latest addition to the Board. As long-time residents of Fauntleroy, she and her husband Will raised their children here and have watched the community grow and change into what it is today. She also brings experience as past president of the West Seattle Chamber of Commerce.



Please join me in welcoming Kimberly and in thanking our other board members for their dedicated service.

FCA LEADERSHIP

Mike Dey, president; 206-661-0673

Alexis Zolner, treasurer; 206-935-6721

Frank Immel, secretary

Catherine Bailey Bruce Butterfield Alan Grainger

David Haggerty Kris Ilgenfritz Susan Lantz-Dey

Kimberly Terry Nils von Veh Bill Wellington

Martin Westerman

Bill Wellington, webmaster/Facebook

fcacommunications@gmail.com

Judy Pickens, writer/editor

KEEP UP TO DATE ON FAUNTLEROY EVENTS ON FACEBOOK
If you're a member of Facebook, go to www.facebook.com/FauntleroyCommunityAssociation.

WWW.FAUNTLEROY.NET

P.O. BOX 46343
SEATTLE, WA 98146

